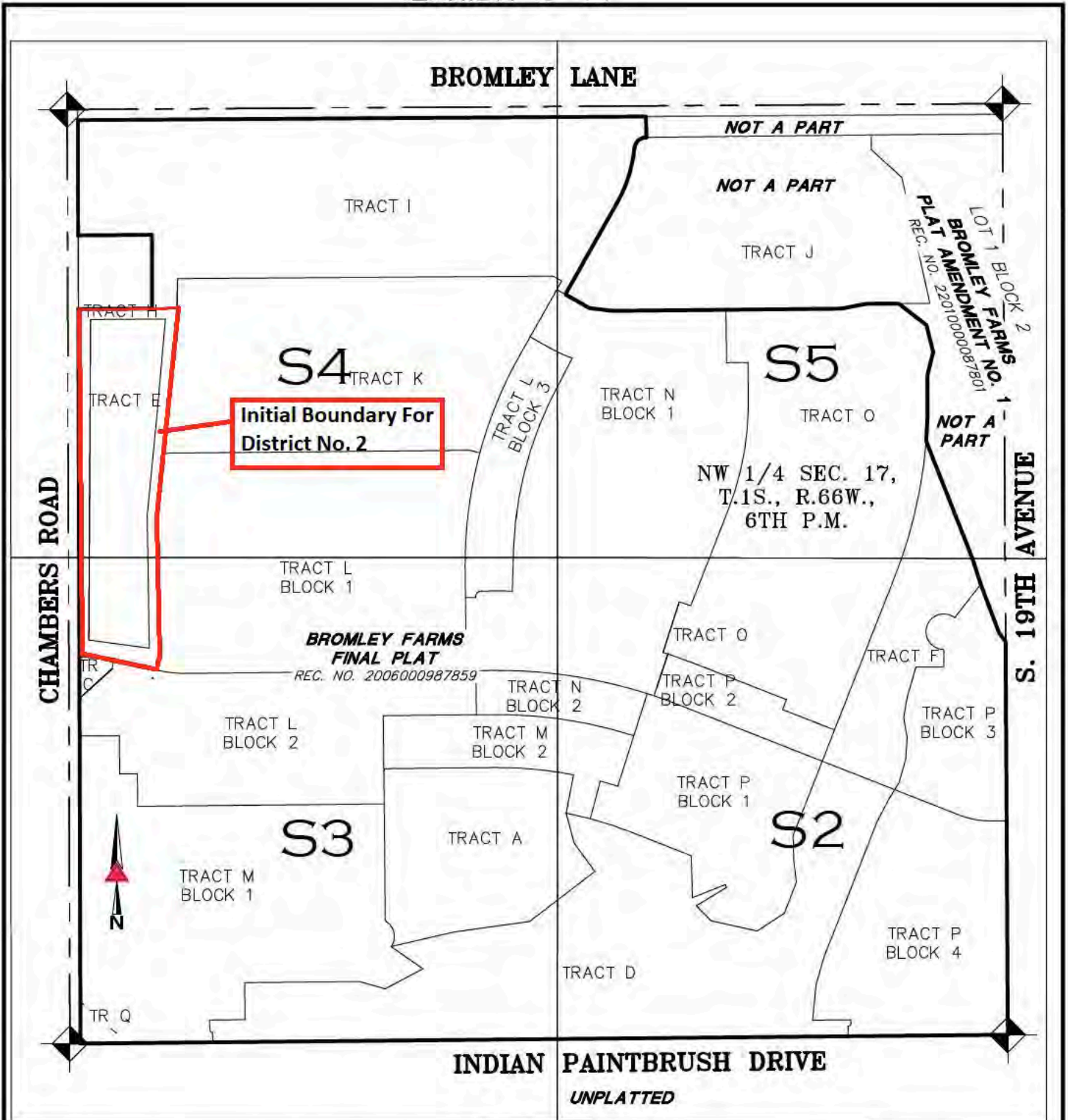


# EXHIBIT C-2



OVERALL 1"=400'

NOTE: THIS DRAWING DOES NOT REPRESENT A MONUMENTED LAND SURVEY AND IS ONLY INTENDED TO DEPICT THE ATTACHED LEGAL DESCRIPTION.

PATH:  
 DWG NAME: EXHIBIT C-3  
 DWG: RBA CHK: DED  
 DATE: 07-02-2018  
 SCALE: 1" = 200'

Q:\54818-31 - Bromley Farms ALTA\DWG\EXHIBITS

300 East Mineral Ave,  
 Suite 1  
 Littleton, Colorado 80122  
 Phone: (303)713-1898  
 Fax: (303)713-1897  
[www.aztecconsultants.com](http://www.aztecconsultants.com)

**INCLUSION AREA BOUNDARY MAP**  
 NW 1/4 SEC. 17, T.1S., R.66W., 6TH P.M.  
 ADAMS COUNTY, COLORADO  
 JOB NUMBER 54818-31 1 OF 6 SHEETS